

# **MEETING NOTICE**

## Village of Scarsdale

A joint meeting of the Village of Scarsdale Board of Trustees and the Scarsdale Board of Education will be held at 7:00 P.M. on Thursday, May 23, 2024. The meeting will be held at Scarsdale High School, 2 Brewster Road, Room 170, Scarsdale, NY. All interested members of the public have the option to attend in-person or virtually through Zoom. To participate via Zoom, attend online at <https://scarsdaleschools-org.zoom.us/j/99291292911>.

### **Agenda**

1. 7:00 PM - Joint Village/School Field Study Update

CS: 05-17-24

E-MAIL: Journal News (Lohud)  
Scarsdale 10583  
Scarsdale Hamlet Hub  
The Daily Scarsdale

cc: Lobby Bulletin Board



# Comprehensive Athletic Field & Court Study

Village of Scarsdale | Scarsdale Free School District

Public Outreach Meeting #1

May 23, 2024



# Project Purpose

- The comprehensive athletics field study will include outdoor field sports and configurations, including baseball, soccer, softball, lacrosse, tackle football, field hockey, flag football, rugby, cricket, kickball, track and field, and ultimate Frisbee.
- This study will also include outdoor court sports, including tennis, basketball, paddleball, pickleball, and volleyball.
- Field uses will include both youth and adult activities. The study will address gaps in service for all levels of participation locally but will also identify facilities needed to compete on a local, regional, and state level.
- Stakeholders from all identified sports and associated agencies will be contacted to understand their current, short-term, and long-term needs to successfully provide opportunities for all ages, abilities, and economic backgrounds.
- The main purpose is to establish recommendations for the improvement of recreation and athletic facilities in Scarsdale.

# Process

The first step of the study is to conduct an extensive site analysis and public outreach phase of the study as follows:

On-site review of every study site with Village and District personnel and received comments from personnel on each field/facility.

We are in the process of conducting public outreach as follows:

- Focus Group meetings
- Stakeholder interviews
- Public meetings
- Social media
- Interviews with programmers

The next step will be to evaluate the public input and make recommendations for improvements.

There will then be a Public review process of recommendations.

We will then work with the Village and the School District on and phasing and implementation plan.

No decisions  
have been  
made.

We still want  
your input!



# Questions to think about:

- What primary facilities do you use?
- What works well?
- What would you like to see improved?
- What amenities would you like to see added to the existing facilities?
- What overall facilities would you like to see added in the community?
- What new recreational activities/programs would you like to see available?
- What key partners and stakeholders in the community can assist with the recommended improvements?
- What priorities need to be considered while undertaking improvements?
- Anything else you would like us to know?
- General comments



# Study Sites & Site Analysis

# Study Sites

## Village

- Boulder Brook Complex – Upper/Lower (Winston)
- Municipal Pool Recreation Areas
- Crossways Field and Courts
- Brite Avenue Courts
- Village Courts (at High School and Middle School)
- Hyatt Field
- Scout Field
- Supply Field
- Aspen Park
- Colonial Acres Park
- Corell Park
- Drake Road Park
- Wymore Park

## School District

- Scarsdale High School – All outdoor  
Butler Track and Field  
Dean Field  
Practice Areas
- Scarsdale Middle School
- Edgewood Elementary
- Fox Meadow Elementary
- Greenacres Elementary
- Heathcote Elementary
- Quaker Ridge Elementary

# Key Themes

## **Playability of existing fields:**

- Most fields have drainage issues particularly after rain events and fields are closed quite a bit due to wet conditions.
- Winston Field (Lower Boulder Brook) in particular is the most underused field due to wet soil conditions/drainage issues. Can only be relied on for practice, if games are scheduled there, they often get postponed or canceled.
- Scarsdale Middle School is perceived as having the most opportunity and is currently underutilized.
- Recognition of the need to support field conditions through passive rest.

## **Insufficient capacity:**

- Perception of not enough time scheduled for some sports.
- Conflicts in desired times with other ISO's and school sports.
- Not enough outdoor basketball courts for competitive play (indoor court facilities not in this study, but also identified as a concern).
- Fields lack amenities.

## **Planning and Communication:**

- Would like to see a really clear roadmap for implementing improvements.
- More policies between village and school uses/priorities established.
- Phasing improvements equitably both between sports and gender.
- Efficient use of dollars and land to get the most bang for the buck and help the most people.



**NOTES - BOULDER BROOK FIELD:**

1. NO ADA ACCESSIBILITY
2. PORTABLE BLEACHER SPECTATOR AREA IS NOT ADA ACCESSIBLE
3. NO STORAGE AREAS
4. NO RESTROOMS
5. GOOD FIELD LAYOUTS
6. NETS/GOALS ARE CURRENTLY TRANSPORTED TO SITE WHEN NEEDED

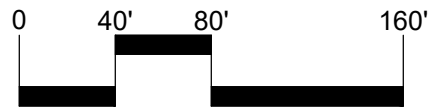
TURF IN FAIRLY GOOD CONDITION BUT UNEVEN AND DOESN'T DRAIN WELL IN SOME PLACES. FIELD IS COMPACTED AND OFTEN WET AND UNPLAYABLE. GAMES ARE OFTEN CANCELED

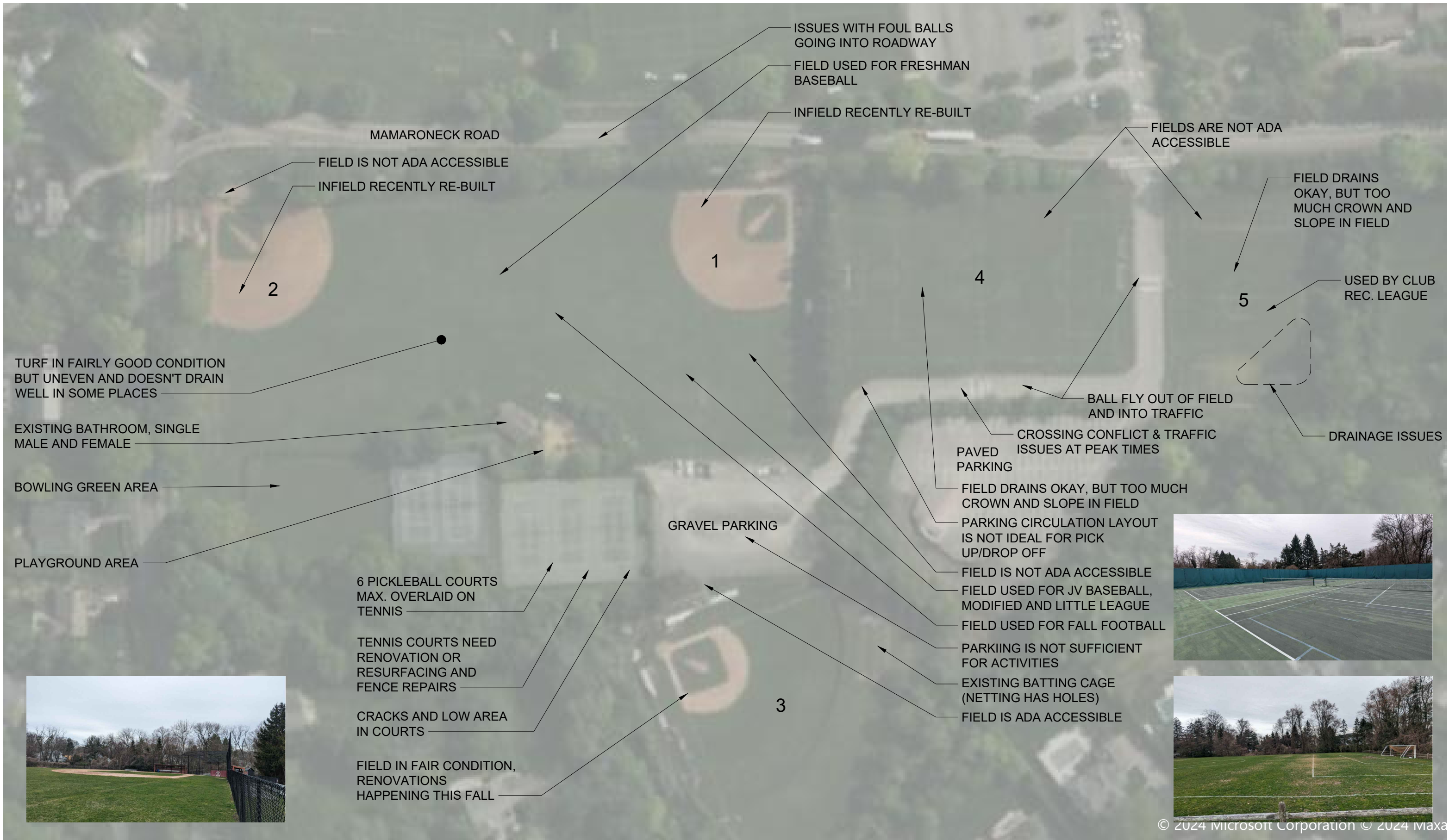


# Scarsdale: Athletic Field and Courts Study

Municipal Pool/Boulder Brook/Winston Fields: Base Map and Ex. Conditions Analysis May, 2024

Scarsdale, NY



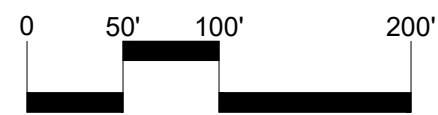


# Scarsdale: Athletic Field and Courts Study

Crossway Field: Base Map and Existing Conditions Analysis

Scarsdale, NY

May, 2024



© 2024 Microsoft Corporation © 2024 Maxar

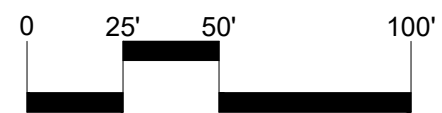


# Scarsdale: Athletic Field and Courts Study

Brite Avenue Courts: Base Map and Existing Conditions Analysis

Scarsdale, NY

May, 2024



NOTES:

- 1. NO OFF STREET PARKING. STREET PARKING IS DIFFICULT FOR LEAGUE PLAY AND DISRUPTIVE TO NEIGHBORS



© 2024 Microsoft Corporation © 2024 Maxar ©CNES (2024) Distribution Airbus DS

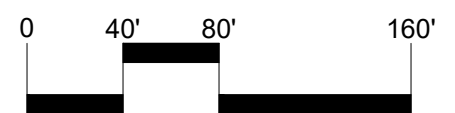


# Scarsdale: Athletic Field and Courts Study

Hyatt Field: Base Map and Existing Conditions Analysis

Scarsdale, NY

May, 2024





PLAYGROUND AREA

WATER DRAINS ONTO FIELD

WARMING HUT (PAVILION WITH FIRE PITS)

WATER DRAINS ONTO FIELD

BETTY TAUBERT GIRL SCOUT HOUSE

NO ADA ACCESS OR SPECTATOR SEATING

SHARED PARKING

WAYSIDE LANE

VERY WET

PLAYERS BENCHES

FIELD HEAVILY USED BY SCHOOL FOR SOCCER AND LACROSSE

TURF IN FAIRLY GOOD CONDITION. UNEVEN IN PLACES AND DOES NOT DRAIN WELL

STREAM

WATER DRAINS ONTO FIELD

CONNECTION TO HIGH SCHOOL

VILLAGE COURTS

**NOTES:**

- 1. SITE HAS HIGH WATER TABLE
- ~~2. ALL FIELDS ARE OVERUSED~~
- 3. MAINLY USED FOR HS LACROSSE, NO OR LIMITED RECREATION USE

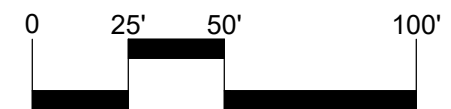


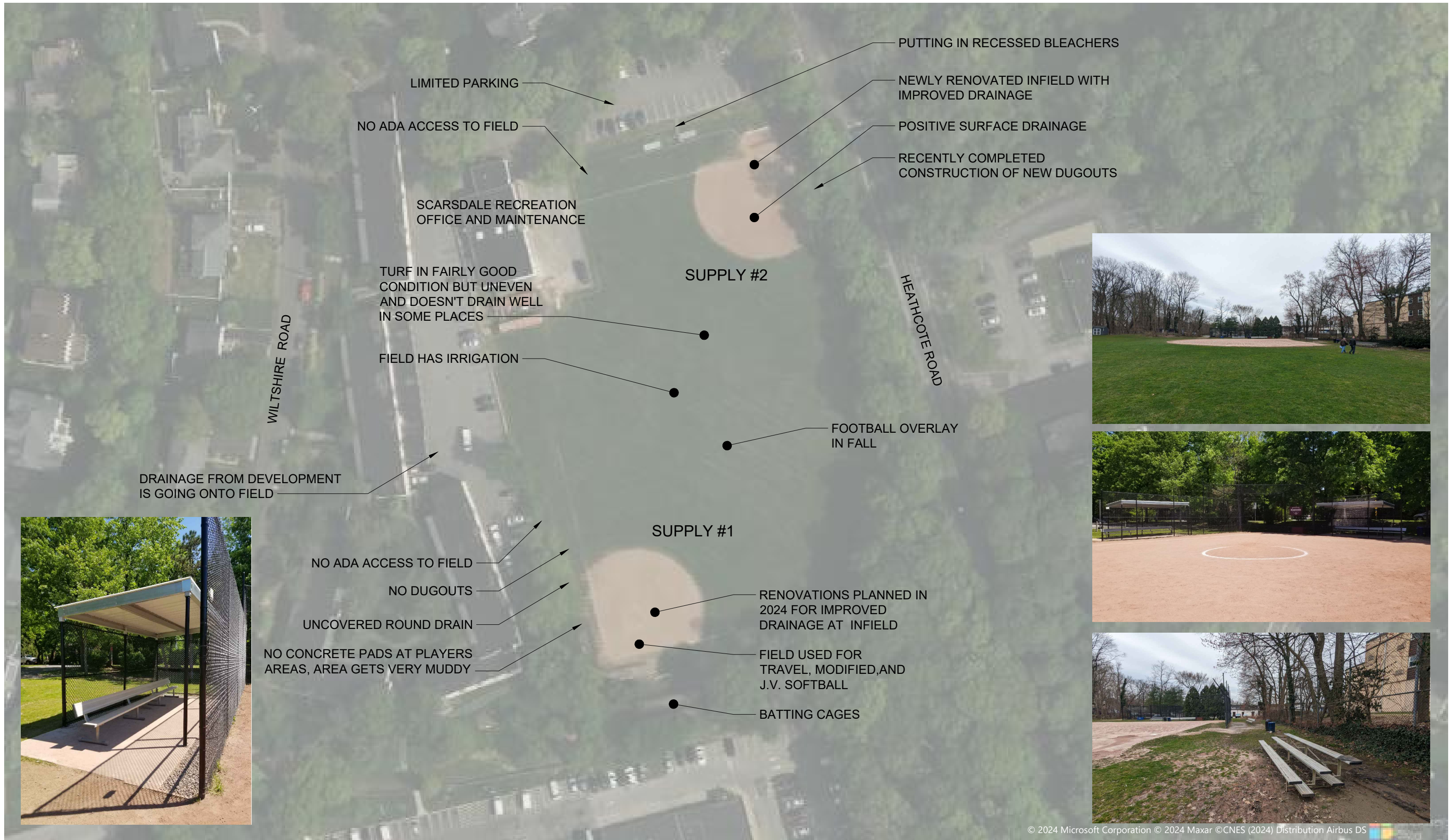
# Scarsdale: Athletic Field and Courts Study

## Scout Field: Base Map and Existing Conditions Analysis

Scarsdale, NY

May, 2024





© 2024 Microsoft Corporation © 2024 Maxar © CNES (2024) Distribution Airbus DS

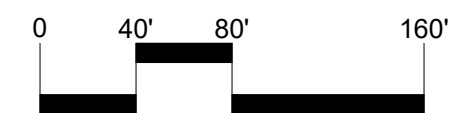


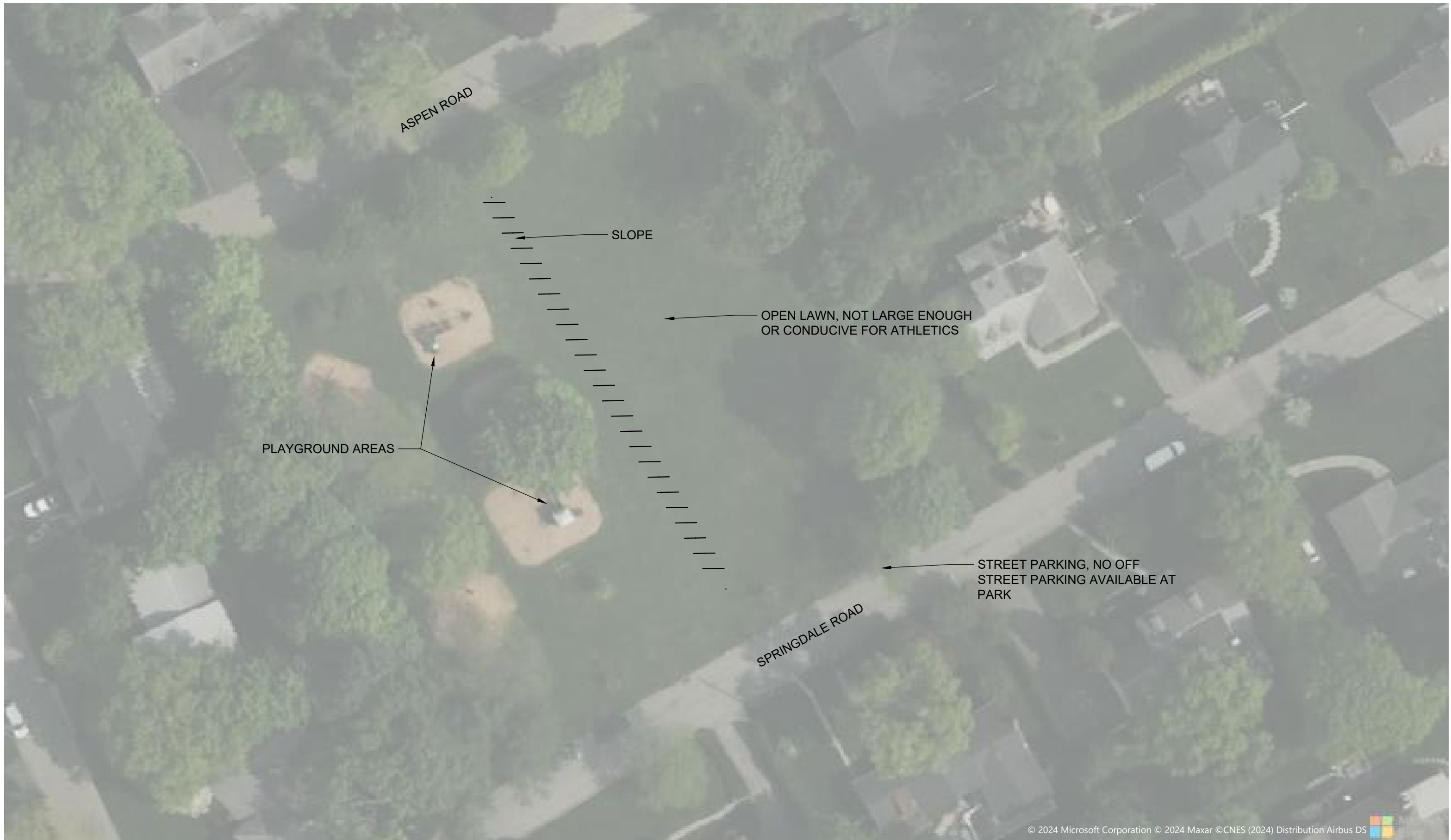
# Scarsdale: Athletic Field and Courts Study

Supply Field: Base Map and Existing Conditions Analysis

Scarsdale, NY

May, 2024



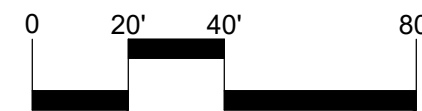


# Scarsdale: Athletic Field and Courts Study

Aspen Park: Base Map and Existing Conditions Analysis

Scarsdale, NY

May, 2024





© 2024 Microsoft Corporation © 2024 Maxar ©CNES (2024) Distribution Airbus DS

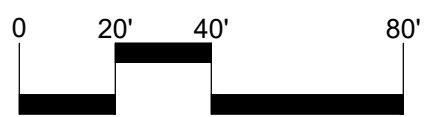


# Scarsdale: Athletic Field and Courts Study

Colonial Acres Park: Base Map and Existing Conditions Analysis

Scarsdale, NY

May, 2024





© 2024 Microsoft Corporation © 2024 Maxar ©CNES (2024) Distribution Airbus DS

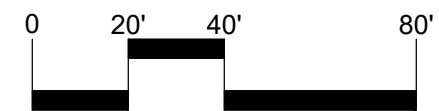


# Scarsdale: Athletic Field and Courts Study

Corell Park: Base Map and Existing Conditions Analysis

Scarsdale, NY

May, 2024





# Scarsdale: Athletic Field and Courts Study

## Drake Road Park: Base Map and Existing Conditions Analysis

Scarsdale, NY  
May, 2024

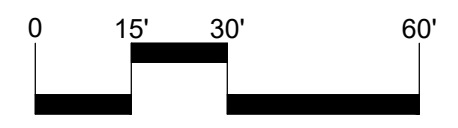




# Scarsdale: Athletic Field and Courts Study

## Wynmor Park: Base Map and Existing Conditions Analysis

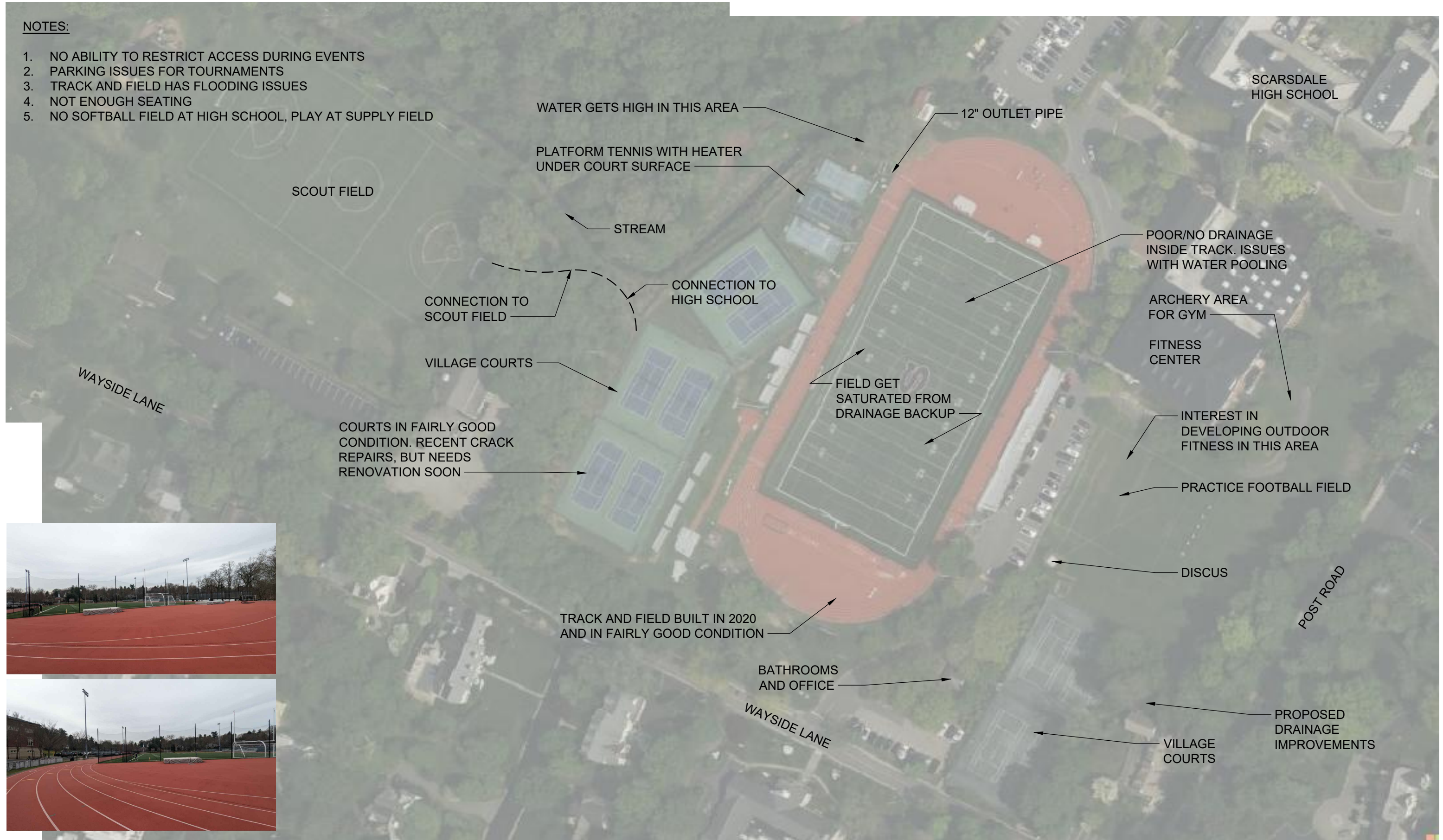
Scarsdale, NY  
May, 2024



© 2024 Microsoft Corporation © 2024 Maxar ©CNES (2024) Distribution Airbus DS

**NOTES:**

1. NO ABILITY TO RESTRICT ACCESS DURING EVENTS
2. PARKING ISSUES FOR TOURNAMENTS
3. TRACK AND FIELD HAS FLOODING ISSUES
4. NOT ENOUGH SEATING
5. NO SOFTBALL FIELD AT HIGH SCHOOL, PLAY AT SUPPLY FIELD

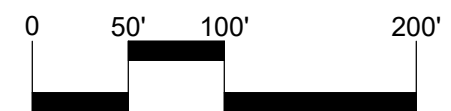


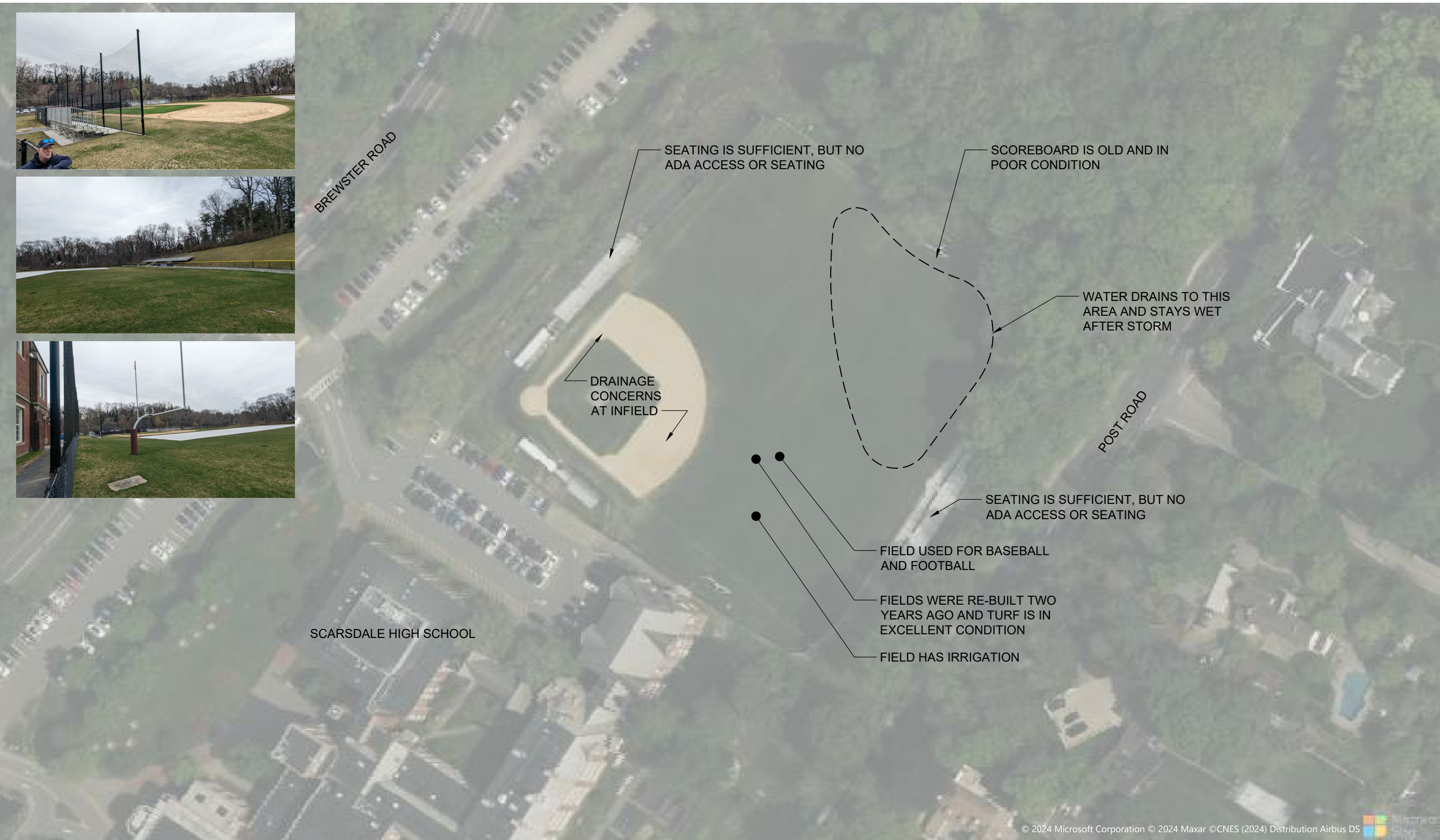
# Scarsdale: Athletic Field and Courts Study

Scarsdale HS - Butler Track: Base Map and Existing Conditions Analysis

Scarsdale, NY

May, 2024





# Scarsdale: Athletic Field and Courts Study

Scarsdale HS Dean Field: Base Map and Existing Conditions Analysis

Scarsdale, NY

May, 2024



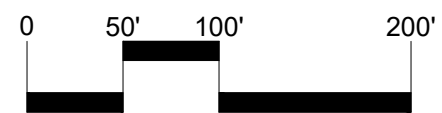


# Scarsdale: Athletic Field and Courts Study

Scarsdale Middle School: Base Map and Existing Conditions Analysis

Scarsdale, NY

May, 2024





EDGEWOOD ELEMENTARY SCHOOL

BASKETBALL

PLAYGROUND

AREA VERY COMPACTED

RODNEY ROAD

NELSON ROAD

EDGEWOOD ROAD

NOTES:

1. SITE HAS GOOD BALANCE BETWEEN SCHOOL AND RECREATIONAL USE
2. CURRENTLY NO ADA ACCESS TO FIELDS/RECREATIONAL AREAS
3. LIMITED TO NO SPACE FOR NEW ATHLETIC AREAS
4. CURRENTLY NO BLEACHERS, AND NO REASON TO ADD BLEACHERS
5. PARKING IS CURRENTLY NOT A PROBLEM FOR LEVEL OF USE
6. BACKSTOPS, FENCING AND PLAYER'S AREAS ARE IN GOOD CONDITION. COULD USE SOME MINOR REPAIRS.

INFIELD DIFFICULT TO MAINTAIN

TURF IN FAIRLY GOOD CONDITION. UNEVEN IN PLACES AND DOES DRAIN WELL

IRRIGATION

TURF IN FAIRLY GOOD CONDITION. UNEVEN IN PLACES AND DOES DRAIN WELL

INFIELD DIFFICULT TO MAINTAIN

© 2024 Microsoft Corporation © 2024 Maxar ©CNES (2024) Distribution Airbus DS



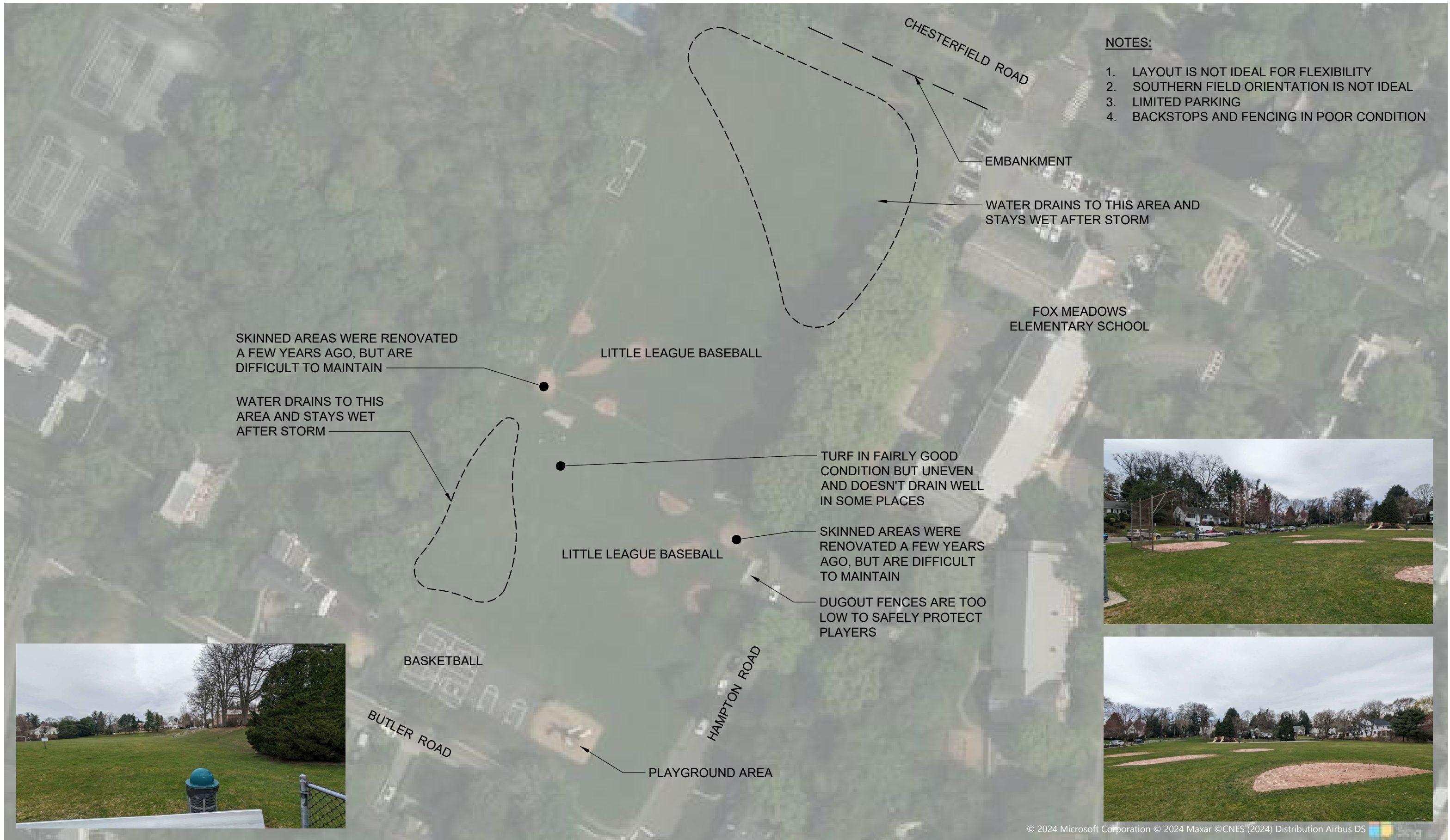
# Scarsdale: Athletic Field and Courts Study

## Edgewood Elementary School: Base Map and Existing Conditions Analysis

Scarsdale, NY

May, 2024



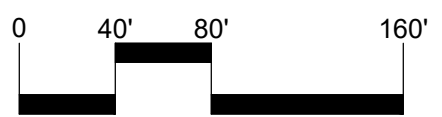


# Scarsdale: Athletic Field and Courts Study

Fox Meadow Elementary School: Base Map and Existing Conditions Analysis

Scarsdale, NY

May, 2024





NOTES:

- 1. LAYOUT IS NOT IDEAL FOR FLEXIBILITY
- 2. SOUTHERN FIELD ORIENTATION IS NOT IDEAL
- 3. LIMITED PARKING
- 4. BACKSTOPS AND FENCING IN POOR CONDITION

FIELD RECENTLY CONVERTED FOR SOFTBALL USE

IRRIGATION

TURF IN FAIRLY GOOD CONDITION BUT UNEVEN AND DOESN'T DRAIN WELL IN SOME PLACES

SKINNED AREAS WERE RENOVATED A FEW YEARS AGO, BUT ARE DIFFICULT TO MAINTAIN

PARKING

DUGOUT FENCES ARE TOO LOW TO SAFELY PROTECT PLAYERS

PLAYGROUND AREA

HUNTINGTON AVE.

MONTROSE ROAD

© 2024 Microsoft Corporation © 2024 Maxar © CNES (2024) Distribution Airbus DS



# Scarsdale: Athletic Field and Courts Study

Greenacres Elementary School: Base Map and Existing Conditions Analysis

Scarsdale, NY

May, 2024

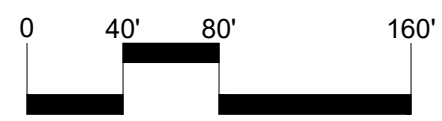




# Scarsdale: Athletic Field and Courts Study

## Heathcote School: Base Map and Existing Conditions Analysis

Scarsdale, NY  
May, 2024





# Scarsdale: Athletic Field and Courts Study

Quaker Ridge Elementary School: Base Map and Existing Conditions Analysis

Scarsdale, NY

May, 2024

